

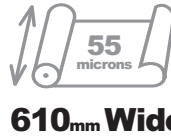


# Cad-Colour Solutions® OPAQUE NEW

The most advanced wide format heat applied media in the world!



**TARGET**  
IDENTITY FOR TEXTILES  
a GroupeSTRAHL company



- ✓ Nylon\* ✓ Lycra®
- ✓ Spandex® ✓ Cotton
- ✓ PolyCotton Blends



## Before you start!

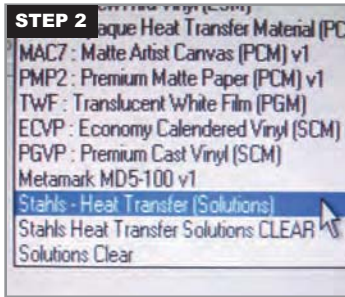
- You will need a Weeder, a Squeegee, Solutions Mask® and Release Paper.
- Choose a GripFlex Pad or a Teflon Sheet for a textured finish.
- Download your colour profile at [www.targettransfers.com/customer-support](http://www.targettransfers.com/customer-support)
- Always run a test cut to confirm pressure and speed. Test at 50g.
- Check that you have enough Solutions Mask®
- Solutions® will apply to most Nylons - Always test before proceeding.
- For specialized Nylon application please call our customer services.



## How to Print & Cut Solutions Opaque®



Create your image right reading as shown and then print to your output device. Refer to the specific instructions for your machine regarding file formats.



To image onto Cad-Colour Solutions® you will need to use the **Stahls - Heat Transfer Solutions** colour profile. You can download the colour profile for your specific machine from our website on the customer support pages.



If your image is designed as the example shown above with a white border then print with registration marks and remove from the printer to dry between **3-4 hours** before cutting.



If your image is designed without a white border and your intention is to cut within the printed image then print with registration marks and remove from the printer to dry between **4-6 hours** before cutting.



Once cut weed the excess material away ready for masking with Solutions Mask®. For small detail use an Ez Weeder.



Once weeded you are ready to apply your Solutions Mask®. For small designs cut a piece of mask approximately 10mm bigger than your design. Peel off the mask from the yellow backing and place over your print and cut design. Retain the yellow backing paper!



You will need to remove any bubbles from the mask with a squeegee. By starting from the centre move the squeegee towards the edges. For additional tips go online to TargetTV.



When you are happy with the bond of the mask to the transfer peel back and dispose of the white backing paper.

**TURN THE PAGE FOR STEPS 9,10**

[www.TargetTransfers.com](http://www.TargetTransfers.com) | 01376 326351

Target Transfers, Anglia Way, Braintree, Essex CM7 3RG. Fax: 01376 345876



Exclusive Distributor  
in the UK & Ireland of  
**STAHL'S**  
PRODUCTS



Cad-Colour Solutions®

**OPAQUE**



The most advanced wide format heat applied media in the world!

**TARGET**  
IDENTITY FOR TEXTILES  
a GroupeSTAHL company

## How to Print & Cut Solutions Opaque®



Place your newly created image back onto the yellow backing paper. This will protect your image for storage or postage purposes. You are now ready to apply!



Always store your transfers flat and in a cool dry place away from extreme weather conditions.

## Application Instructions



Set the temperature to **150°C** and the dwell time to **5 seconds** on your heat press. Set the pressure to 50psi or number 5 on your Digital Sprint Mag. Once the press has reached the set temperature pre fuse the garment to remove any moisture or creases that may exist. This process is essential with all transfer application and will ensure better adhesion to the textile.



Remove the yellow backing paper place your garment on the press and position your Solutions® transfer. Cover with release paper and fuse for 5 seconds at 150°C.



After the first 5 seconds fuse remove the release paper and peel off the clear mask slowly. Then replace the release paper and fuse for a further 5 seconds.



Once fused your garment is complete, retain your release paper for future jobs and dispose of the Solutions Mask®.

Applies to **Cool Bags, Caps, Tents, Sports Bags, Leather Goods, Sporting Goods, Socks, Ties, Umbrellas, Suit Cases, Rugby Shirts, Aprons, Tea Towels, Golf Flags, Man Made Leathers, Off Shore Clothing and much much more!**

## Take care when washing!



For best results turn the garment inside out and use a colour detergent during washing.

### Disclaimer

All technical information and recommendations are based upon tests we believe to be reliable, however, we cannot guarantee performance under conditions not under the manufacturer's control. Before using, please determine suitability of the product for its intended use. (i.e. do your own application and wash test). For any application to Nylon, (where appropriate) it should be noted that the type and amount of water repellent treatments vary significantly on different Nylons. This factor will determine how well a product adheres to the fabric. Therefore we cannot guarantee adhesion to all Nylon fabrics. Warranty of product is to replace product only and not the item the transfer has been applied to. Using transfer paper or transfer vinyls may invalidate equipment manufacturers' warranty. Please check with manufacturer or supplier.

[www.TargetTransfers.com](http://www.TargetTransfers.com) | 01376 326351

Target Transfers, Anglia Way, Braintree, Essex CM7 3RG. Fax: 01376 345876

**TARGET**  
IDENTITY FOR TEXTILES  
a GroupeSTAHL company

Exclusive Distributor  
in the UK & Ireland of  
**STAHL'S**  
PRODUCTS